



Lancaster County
Carriage & Antique
 Auction

21st Annual

21st Annual Event!
 Rt. 340 Village of Bird-in-Hand

Thurs. June 24 3:00 p.m.
 Fri. June 25 8:00 a.m.
 possibly selling until 6:00 pm!

2021

2021 EARLY CONSIGNMENTS

This is only a partial listing. New consignments are submitted up until Thursday before the sale. For the latest listings & postings, visit www.birdinhandauction.com

Carriages, Coaches, Buggies, Sleighs & Wagons

EARLY CONSIGNMENTS INCLUDE:



Meadowbrook Cart - Antique horse size w/ flexi-shaft, very good original condition



Weber Wagon - Original condition, unusual tailgate, original painting on sides. Weber-McCorkmick Deering



VEHICLES EXPECTED:

- New & used Amish carriages, buggies, spring wagons & 2-wheeled carts
- Pleasure & Marathon carriages
- Antique vehicles in both original & restored condition
- Various cutters & sleighs



Goat Cart Hungarian-made over 100 years old. All original including paint. Great condition for age. Wooden spoked wheels banded with metal.



Covered Wagon - used for Cooper display at historical events. Wagon is in original condition (late 1800s). Newer canvas top.



Typically about 150 vehicles at the sale!

(Early Consignments continued on page 2)

Consignments Wanted

Items Wanted:

- Carriages, coaches, buggies, sleighs & wagons
- Good antique items
- Furniture
- Blacksmith tools
- New & used tools/equipment
- Quilts (homemade/hand-stitched), crafts, collectibles
- Horse & carriage related items
- Miniature horses & ponies

No junk, appliances, or farm equipment except antique & primitive items like old hay wagons, walking plows, etc.

Consignments will be accepted:

- Tues. June 22.....8am-12pm
- Wed. June 238am-8pm
- Thurs. June 24.....8am-2pm

Tuesday consignment processing will stop promptly at noon.

ABSOLUTELY NO CONSIGNMENTS after 2:00pm on Thursday.

Staff members will be present on these days to help consignors unload their wares and display their goods. On Wednesday and Thursday there will be 24-hour security and on Thursday the food stand will be open from noon till dark.

For more information or to list consignments, call or write:

Hand-in-Hand Fire Company c/o LCCAA
 313 Enterprise Drive • Bird-in-Hand, PA 17505
 717-945-4945 (Auction phone)

- Carriages & General Consignments
- Jake King 717-768-3299
 - or Paul Stoltzfus 717-656-0038
 - Mini Horses Amos Zook 717-556-0378
 - Tack & Harness..... Ephraim Fisher 717-768-8484
 - Quilts..... Christian A. Stoltzfus 717-397-4079
 - Crafts Christ J. Stoltzfus 717-768-0684
 - Field.....Gideon Stoltzfus 717-768-3465
 - Antique Tent ...David & Aaron King 717-768-7523
 - General Info 717-945-4945
 - Shrubbery Ephraim Huyard 717-656-1444
 - Vendors..... Steve Esh 717-768-0304
 - Accounts Receivable Sam King 717-278-3683



**Featured Consignment:
Victoria Carriage**
Built in 1870 by Rufus M Stivers,
New York, NY. Restored in 2019



Canadian Sleigh - International Carriage Co. Brighton, Ontario, original condition, pinstriping, corduroy upholstery in good condition, whip holder, nice dash, brass & nickel work, shafts w/ sleighbells attached



Glass-front Brougham

Wagonette/Presentation Carriage - Nice condition, built by Mill Run Carriage, full cut-under, pole and shafts, natural wood finish, tufted Bedford cord upholstery, hydraulic brakes



Double Bench Surrey well preserved w/ fringe on top.

4-Wheel Trap - original condition, spindle seats

Racing Sleigh - green printed upholstery, shafts



Top Buggy - original condition, Jenny Lind style fringe top with rollup side curtains

6-Seater Wagon - double hitch pole, single shafts, metal rims

Single Seat Runabout - Low mileage, red body, black gear, white wheels, green upholstery, Weber, McCormick Deering



Doctor's Buggy



3-Seat Carriage - 3 Seat Carriage - seats 9 people, not used much, navy with red stripes, single hitch and double pole, new brake system, LED lighting



Early European Sleigh



Queens Body Phaeton - original condition



Lancaster County
**Carriage &
Antique**
Auction
21st Annual

Auction History The Lancaster County Carriage & Antique Auction began in July of 2000 when Weavertown Coach Shop hosted the National Carriage Makers' Reunion in Bird-in-Hand. Jake King and Elam Petersheim, a local antique dealer wanted to clean out the corners around their shops and barns where extra items had accumulated. With potential buyers coming to the area for the reunion, Elam and Jake scheduled a small sale on the day before the get-together. The news of the auction spread by word-of-mouth and 60 other people brought consignment items. It was a successful day and a fun addition to the reunion.

Those who attended the sale encouraged Elam Petersheim, Jake King, and Paul Stoltzfus of Leola Coach, to make the auction an annual event. For seven years the auction was held at Elam Petersheim's farm on Belmont Road east of Gordonville. The auction grew steadily every year.

In 2008, the sale moved to the village of Bird-in-Hand on land made available by the Smucker family. Proceeds now benefit the Hand-in-Hand Fire Company. The sale has remained a quality auction with over one hundred carriages sold on consignment as well as quilts, collectibles, antiques, tools, plants and other quality merchandise. The response had been so overwhelming that in 2013, the Thursday afternoon and evening Early Bird Auction was added since there were too many items to sell on Friday alone.

Vision The vision of the auction is to provide a good, clean market for both consignors and buyers, raise funds for the Fire Company, and create a community event bringing all kinds of people together. Our wish is that the auction will maintain high standards and continue to offer quality merchandise.

Our goals are to continually strive to be fair and ethical and grow the auction by attracting both buyers and sellers. We are excited that it has turned into a destination for many travelers who find it to be an enjoyable day. It is pleasing to us when many satisfied people leave the grounds with their pickup trucks and trailers full of quality purchases when the auction is over.

Ponies/Miniature Horses

We accept ponies & miniature horses up to 40" tall (some are suitable for riding, driving, or both). We anticipate having 15-30 ponies as well as various kinds of pony carts, wagons, & harnesses. Some pony consignments will be available as a unit (pony, cart & harness), but sold separately. Ponies are sold in the order they're consigned. ****All ponies/mini horses should be listed with Amos Zook (717-556-0378) by Wednesday, June 23 and brought to the sale grounds on Friday morning, June 25.**

EARLY CONSIGNMENTS INCLUDE:

- 4 yr. old 34" black & white gelding, good broke to drive, good for older children, has some snap
- 10 yr. old 42" brown gelding, broke to ride & drive, good children's pony babysitter deluxe, very tame pony



Smartie - 2 yr old 37" bay paint gelding. Green broke to drive.



Sparky - 2 yr old 37" black & white paint. Well-started, great kids pony.



Nutmeg - 11 yr old 38" brown mare. Good to ride & drive. Running with a black and white stud.

Miscellaneous Carriage Appointments, Harness, Tack, Horse Related

ITEMS EXPECTED: Lots of new & used harness, tack, equine related items; carriage lamps & appointments; books, pictures, & prints.



Featured DONATION:
20 ft. Mini Horse Training Round Pen
 Galvanized steel. Made by Smyrna Grove Manufacturing.
 Donated by an anonymous local company.

Farm & Garden

ITEMS EXPECTED: Nursery items, flowers, hand tools, antique cultivators, horse-drawn plows, sheds & more!

EARLY CONSIGNMENTS INCLUDE:

- (4) green park benches
- Birdhouses
- Cast iron planters
- Garden decor
- Pedal tractor
- Hitching posts
- Waterers
- Nursery items (shrubs, flowers, trees, succulents, perennials, annuals, and more!)



Quilts, Local Crafts & Furniture

Our quilt sale continues to grow and this year will be no exception. In 2019, we had well over 100 lots including quilts, wall hangings, pillows, etc. We expect many good quality consignments from local manufacturers and quilters. **For quilt consignments, please contact Christian & Barbie Stoltzfus (Carriage Machine Shop) 717-397-4079.** Quilts may be dropped off before the sale at Carriage Machine Shop, 250 Maple Ave, Bird-in-Hand.

EARLY CONSIGNMENTS INCLUDE:

- Quilt, original, 52" x 70"
- Sunshine & Shadow, blue/green/purple, 88" x 88"
- Sunshine & Shadow, blue/green, 89" x 90"



Lancaster County Made Queen Bedroom Set - Lancaster County made, consigned by Stoltzfus Furniture, 5 pieces (bed, dresser, mirror, chest of drawers, and night stand), soft close door glides, rustic white oak w/ barnwood tops.



Quilt photo from previous auction

Antiques & Collectibles

ITEMS EXPECTED: Lots of good quality antiques & collectibles from local dealers and others. We will be selling all day in the big tent! Plus, many good quality items in the field!

EARLY CONSIGNMENTS INCLUDE:

- (4) restored sawbucks
- (4) restored mill wheels
- Toybox, restored
- Cradle w/ babydoll, original
- Sausage Stuffer #25, restored
- Assorted crocks
- Piano Seats (2), restored
- Copper kettle w/ stand, restored
- Wheelbarrow, restored
- Antique tools
- (3) Steamer trunks, restored inside & outside
- Antique Clock, retrofitted with 12 different auctioneer chants



Featured Consignment:
Kitchen Range
 Good condition, Penn Esther 70-18-M





Large assortment of railroad antiques from one collector!



Assorted restored antiques



Copper Wash Boiler - restored, with lid

Please consider donating an item!

Last year, the Fire Company profited \$6,700 from donated items. Your donation generates 100% profit for the Fire Company! Gather a few friends to collaborate on a homemade project such as a quilt, piece of furniture or a gift basket. Or, pull together some business associates and donate a high-value item for the noon specialty sale. Your business(es) will be recognized in the sale day catalog and on the auction block. Receipts for tax deductions are available for items over \$250.

Contact: Jake King
717-768-3299 or Amy
Wissing 717-330-3149.



Scale - Toledo Store Scale no. 65628 w/ Toledo Computing Scale, company style no. 257



Meat Slicer - American slicing machine company no. 98466

Don't Miss our Expanded Thursday Evening!



Bid!

4-5 auction blocks
running 3:30-8:00pm!



Be social!

Join the locals.
Meet up with friends.



Eat!

Grab-n-go auction food or
homemade pizza & wings
buffet dinner

Come out for a social evening! Grab a bite to eat and enjoy time together as a community as you bid to support the Fire Company. From tools and tack to plants, crafts, and antiques, there will be something for everyone.

Lots to bid on Thursday evening!



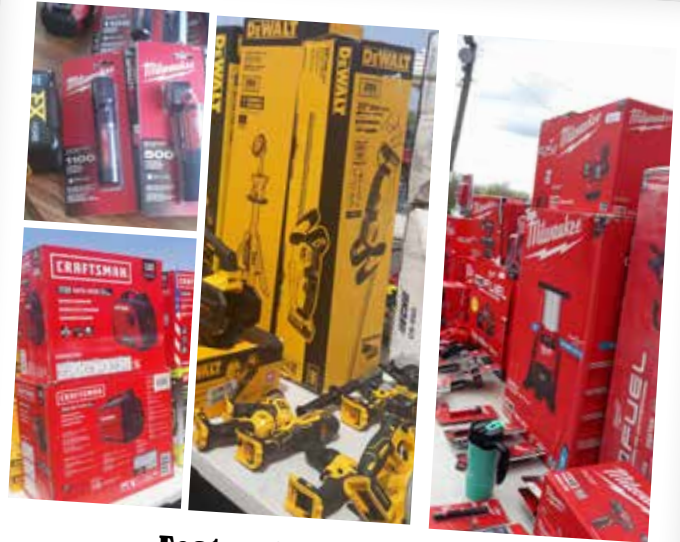
Shrubbery, flowers, crafts



New Tools



Antiques, collectibles, field items, small tack



Featured Consignment: Over \$125,000.00 in NEW TOOLS!

Pallets of spring products such as string trimmers, blowers chainsaws, both Milwaukee and DeWalt. Echo and Husqvarna chainsaws and backpack blowers. All new drills, impacts, sanders, circular saws, sawzalls, grinders, selling at a fraction of what the hardware stores sell for. Also 200+ Dewalt and Milwaukee batteries. Our tool auction will start Thursday evening and continue into Friday.



GET CASH | BUILD COMMUNITY

Consign your items at the 21st annual **Thurs. & Fri.**
Lancaster County Carriage Auction **June 24 & 25**

From fine carriages to miniature horses, one-of-a-kind antiques, furniture, and high-end quilts and crafts – LCCAA is nationally known for unique, quality items. Start your spring cleaning and consign with us! We make consigning and pay-outs easy, and you'll be helping to build community in the process!

Check out these tips for consigning and visit www.birdinhandauction.com to learn more about us!

Who We Are

The Lancaster County Carriage & Antique Auction is a live auction event held under several open-air tents in the Lancaster County countryside.

Each year, our team of 448 volunteers and 23 auctioneers transform our quiet country fields into a bustling marketplace that features 460 consignors and 4,000 event-goers from 27 states and 3 countries!

Proceeds from the auction benefit the Hand-in-Hand Fire Company, the volunteer fire company serving Bird-in-Hand, Pennsylvania.

Consigning Process

Commit your inventory with us in advance, or simply pull up the week of the auction during our drop-off days. Either way, our team will make the process easy for you!

Consignment drop-off days:

June 22 Tuesday, 8am-12pm

June 23 Wednesday, 8am-8pm

June 24 Thursday, 8am-2pm
(no items after 2pm)

Arrive on-site with your items at check-in. Our team will take a quick inventory and direct you to specialized category crews based on what you are selling. Your items may be registered as a lot or by piece. Consignors will receive copies of their items and lots numbers. All items must be in good, working condition unless antique. Please no appliances or farm equipment unless they are antique quality.



How to Get Free Advertising for Your Items

Consign early to have your items featured in our pre-sale catalog that is mailed to 7,000 event-goers! Some items may also be featured in our ad campaigns.

Use the attached consignment form and mail or email it to us by May 15 for inclusion.



Hauling, Storing, & Dropping Off Your Items

We cannot store your items prior to the auction drop-off dates. Items dropped off during the week of the auction will be sorted, displayed, and cared for.

Need help hauling? Contact us for a list of local options!



Getting Paid

All auction items are sold on a consignment model meaning that you take home a cut of the sale, and a portion is also donated to the Hand-in-Hand Fire Company.

After the auction, consignors will receive payment via check that will be mailed within one week of the event. Any unsold items can be picked up directly following the auction or left for donation.



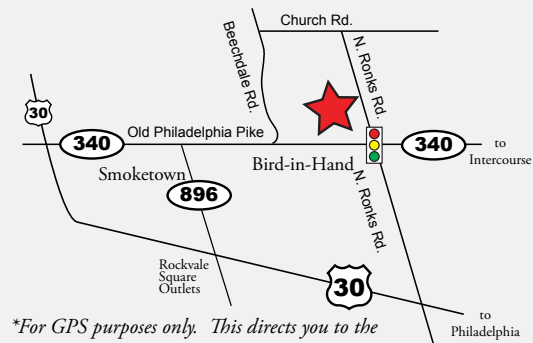
Make a Donation

If you have unwanted items but do not want to go through the consignment process, consider donating to LCCAA!

Simply drop off your items during the listed consignment drop off dates and let our team know that you are making a donation. A receipt will be provided by Hand-in-Hand Fire Company for tax purposes.

Auction Location

GPS: 338 N. Ronks Rd, Bird-in-Hand, PA 17505*
(Rt. 340, across from Bird-in-Hand Family Inn & Restaurant)



*For GPS purposes only. This directs you to the parking location. Not a mailing address.

Help Us Be Good Neighbors!

Do NOT park at the Bird-in-Hand Farmer's Market or other businesses.



TENTATIVE SCHEDULE

THURSDAY June 24

- 12:00 pm Grab-n-go auction food available
- 2:00 Consignment Processing ENDS!
- 3:00 Homemade pizza & wings buffet dinner
- 3:30 Early Bird Auction - 4-5 blocks will be selling shrubbery/flowers, crafts, antiques/collectibles, field items, small tack items, new tools, and more.
NOTE: No carriages will be sold until Friday.
- 8:00 End - Gute Nacht!



FRIDAY June 25

- 8:00 am **sharp!** Antiques/Collectibles
- 8:00 Field Rows
- 8:00 Flowers/Shrubbery/Nursery
- 8:00 Tack
- 8:30 Crafts
- 9:30 Wagon Loads of Misc. Household
- 9:30 Quilts & Related Items
- 10:30 Mini Horses & Ponies
- 10:30 Furniture
- 12:00 Specialty Items
- 12:30 Carriages

**RAIN
OR
SHINE!**

Times may change! See the sale day catalog on Friday morning for final schedule.



Family Event! Bring the Kids!

Bring the whole family to this community event. Kids will love seeing the miniature horses driven around the grounds throughout the morning and adults will enjoy sharing stories about antique items. And, of course, everyone will enjoy the food!

Lodging



Stay at a Bird-in-Hand Property!

The Bird-in-Hand family of properties are located in the historic village of Bird-in-Hand in the heart of Lancaster County's Amish farmlands. Choose from a variety of lodging properties for your stay:

- Family lodging with an array of activities at the **Bird-in-Hand Family Inn**, located directly across from the auction grounds
- Historic, upscale country lodging at the **Bird-in-Hand Village Inn & Suites**
- Clean, friendly, affordable lodging at **Amish Country Motel**
- Quaint country lodging at **Travelers Rest Motel**
- Clean, quiet camping with spacious sites at **Country Acres Campground**

For more information or to make a reservation, call 800-665-8780 or visit Bird-in-Hand.com.



Transportation at the Auction Horses + Wagon = Fun

Even though the distance is only a quarter of a mile and easily walkable, the wagon ride is fun for children. The adults appreciate the convenience, especially in the afternoon when riders bring their auction purchases with them. Whenever possible, the wagon delivers people and goods right to their vehicles.

Parking & Accessibility

Plenty of parking is available in the fields adjacent to the auction grounds. Fire police will direct you.

The parking area is graciously donated by the Levi Beiler family. They give up one of their harvests to plant grass for us. You will find the area fairly flat and easy to manage strollers, wheelchairs, and wagons.

Restrooms

We may be in the country, but we provide more than a barn for your comfort needs! Clean portable toilets and handwashing stations are located throughout the auction grounds.

Vendors

If you are interested in being a vendor at the auction, please contact Steve Esh 717-768-0304 as soon as possible.

Commission Schedule

ALL ITEMS except quilts, carriages & ponies

(Total combined sales per category)

Total Sales	Minimum Commission	Commission Rate
\$1 - 150\$1.0025%
\$151 - 500\$37.5022.5%
\$501 - 1,000\$112.5020%
\$1,001 - 1,500\$200.0017.5%
\$1,501 & Up\$262.5015%

CARRIAGES (Per item)

Total Sales	Minimum Commission	Commission Rate
Up to \$1,000\$10.0015%
\$1,001 - 1,500\$150.0012.5%
\$1,501 - 2,000\$187.5010%
\$2,001 & Up\$200.008%

QUILTS & RELATED ITEMS

(Total combined sales)

Total Sales	Minimum Commission	Commission Rate
\$1 - 200\$1.0015%
\$201 - 1,000\$30.0012.5%
\$1,001 & Up\$125.0010%

MINIATURE HORSES/PONIES 10%

No reserves under \$1,000 per item.

No sale fee is 3% or maximum \$75.00.

No consignment checks will be sent for less than \$5.00.

All proceeds benefit Bird-in-Hand Volunteer Fire Company.

Terms

Cash (US Funds only), money orders, checks. Credit cards accepted. All checks must be accompanied by a current bank letter of credit or be given prior approval by one of the committee members. **Auction committee is not responsible for accidents, injuries, or theft that may occur on auction grounds.**

1. This is not an absolute auction.
2. Cash/check/credit card settlement on day of sale. Visa/Mastercard/Discover are accepted, **subject to 3% processing fee.** All checks must be accompanied by a bank letter of credit or be given prior approval by a Sale Committee Member.
3. No sales tax or buyers premiums.
4. Unsettled accounts will be turned over to a bill collector.
5. Owner has 2 days to remove merchandise from Sale Grounds, after which (unless other arrangements are made) the Sale Committee will dispose of items as seen fit.
6. The Sale Grounds are closed on Sunday.
7. Sale Committee is not responsible for the condition of any item sold. Please inspect your items before purchasing.
8. Sale Committee is not responsible for any accidents, injuries or thefts that may occur on the Sale Grounds.
9. Items resold privately will be subject to a commission fee.

Security / Checkout

For your convenience, a secure area for checking parcels and large items is located in the center of the auction grounds. This service is available to you for several hours as you continue to bid.

BIDDER NUMBER AND/OR TICKET STUBS ARE REQUIRED TO RETRIEVE YOUR ITEMS FROM THE ROUND PEN.

Exit Security / Checkout

When exiting the sale grounds, be prepared to show proof of purchase to security personnel by:

1. Showing your personal BIDDER CARD. That number should MATCH the red number on the item tag. *OR*
2. Showing the TICKET STUB, which should match the item purchased.

Wait Time

Please expect up to a 30 minute wait after purchasing items before attempting to pay for them. Our clerks work as quickly as possible. Thanks for your cooperation.

Loading Times

There will be staff available to help. We have lifts available for heavy items. Small off road equipment to assist in transporting goods will be available, along with extra hands! No vehicle traffic is permitted through the auction complex before 3:00 pm Friday. Items may still be loaded during this time, but please do not disrupt the auction.

Right to Refuse

The Carriage Auction's goal is to create a good, clean environment for families, bidders, consignors, and our community volunteers. We ask that vendors and consignors respect this environment and refrain from offering items that are discriminatory, degrading, racial, or drug- and alcohol-related. The Committee reserves the right to refuse any consignors, vendors, or items that do not meet these guidelines or are otherwise deemed unacceptable. We consider attendees and vendors to be our Guests for the day on our auction grounds.

Misrepresentation

Misrepresentation of an item (i.e. presenting a reproduction as an antique) is not acceptable. Please help us run a clean, honest auction!



Auctioneers

Local Auctioneers
Auctioneer Coordinator:
Mose Esh 717-687-7098.

Main Event Sponsor



Bird-in-Hand
Family Inn, Restaurant

& STAGE

Other Sponsors



BANK OF
Bird-in-Hand

a full service community bank

- The Smucker Homestead (auction grounds)
- The Levi Beiler Family (fields for parking)

"Thank you to our incredibly dedicated volunteers. This auction could not operate without you!"

Volunteers Needed!

Call 717-768-3299 if interested.

2021

Related/Upcoming Events

June 26

Refton Fire Co. Mud Sale

99 Church Street - Refton PA
www.refton59fire.com

Fri. July 16 4:30pm

Haiti Auction Dinner & Auction

Sat. July 17 8:00am (breakfast starts @ 6am)

Haiti Benefit Auction of PA

At the intersection of N. Ronks Rd. & Rt. 340
www.pahaitiauction.com

Sat. Sep. 4 10:30am

Bird-in-Hand Fire Co. Chicken BBQ

All-you-can-eat buffet or take-out
(313 Enterprise Drive - Bird-in-Hand PA)

Sep. 10 & 11

Bird-in-Hand Half Marathon, 5K, and Kids Fun Run

www.bihhalfmarathon.com



Hand-in-Hand Fire Co. 2020 Financial Report

The Fire Company members strive to be diligent managers of the funds they receive and practice responsible stewardship in meeting their financial obligations. As a financially transparent organization, detailed financial reports are available upon request. Please contact Paul Fisher 717-380-1109 or Ivan Stoltzfus 717-341-0297 with inquiries.

LOCAL GOVERNMENT & GRANTS. \$ 104,283

East Lampeter Twp..... 62,500
Grants 41,783

COMMUNITY FUNDRAISING \$ 8,728

Carriage/Antique Auction -9,045
Dinners 36,994
Marathon -19,221

COMMUNITY DONATIONS \$ 47,858

Donations 4,743
Fire Dues Contributions 43,115

RENTAL/LEASE \$ 8,575

Meeting Room Rent 6,325
Sign Lease 2,250

MISC \$ 1,324

INVESTMENTS \$ 72,325

TOTAL INCOME 2020 → **\$ 243,093**

EQUIPMENT \$ 83,985

New Equipment 48,052
Equipment Repair/Maint. 32,081
Computer/Electronics 3,852

UTILITIES/GROUNDS \$ 27,949

Janitor Services & Supplies 3,169
Facilities Repairs/Maint. 6,006
Insurance 6,315
Electric & Heat 9,029
Sewer 764
Telephone/Internet 2,666

OFFICE & ADMIN \$ 23,614

Office Supplies 2,145
Postage & Printing 8,420
Dues 151
Contract Services 12,898

MISCELLANEOUS \$ 6,466

Refreshments/Banquets 3,846
Other 2,620

BUILDING IMPROVEMENT & REPAIR \$ 0

TOTAL EXPENSES 2020 → **\$ 142,014**

NET TRANSFER TO SAVINGS
(for future capital projects) \$ 101,079

ACCOUNT BALANCES 12/31/20

Checking and Savings Accounts 202,294
Certificates of Deposit 616,302
Investment Fund 381,133
Total Assets \$1,199,729
Total Liabilities \$ 0

Early Consignment Form 2021

If you'd like to consign your item before sale week in order to take advantage of our online advertising on Auctionzip.com, complete the form below. **All advertised items MUST BE AT THE AUCTION.**

Return form to:
Jake King c/o LCCAA
3007 Old Phila. Pike
Bird-in-Hand, PA 17505

Email digital submissions to:
amywissing@birdinhandfire.com



Item	Description (features, background details, color, size, year of origin, manufacturer, model #, condition)

Use additional sheets if you need more space.

CONSIGNOR AGREEMENT: I agree to consign the above item(s) to be sold June 24 & 25, 2021.

Signature _____ Date _____

Name _____ Phone _____

Address _____

City _____ State _____ Zip _____

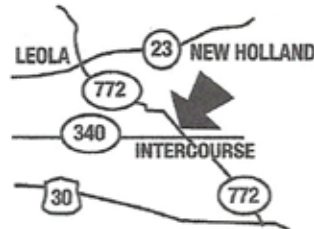
Email _____

All proceeds benefit
Bird-in-Hand
Volunteer Fire Company



MISREPRESENTATION of an item (i.e. presenting a reproduction as an antique) is not acceptable. Please help us run a clean, honest auction!

Customer Appreciation Sale Monday-Saturday, June 21-26, 2021



**Free Refreshments
Friday & Saturday**

10% OFF Storewide
(excluding harnesses & parts)

Village Harness Shop 
Located in Intercourse, PA
Where Friends of Horses Meet

3578 West Newport Rd. (Along Route 772), Ronks, PA 17572
Hours: Mon.-Thurs. 7am-5pm; Fri. 7am-7pm; Sat. 7am-4pm; Closed Sun.
717-768-0381 please leave voice message



Hand-in-Hand Fire Company
 313 Enterprise Dr.
 Bird-in-Hand, PA 17505
www.bihfire.com

Presort Standard
 US Postage
 PAID
 Lancaster, PA
 Permit #23

THANK YOU! The bidding and buying at this sale provides the Hand-in-Hand Fire Company with financial resources to continue their good work of fire protection in the Bird-in-Hand area.

Find us on 

*“Lancaster County Carriage
 & Antique Auction”*

Lancaster County
**Carriage &
 Antique**
 Auction

21st Annual

21st Annual Event!
 Rt. 340 Village of Bird-in-Hand

Thurs. June 24 3:00 p.m.
 Fri. June 25 8:00 a.m.
 possibly selling until 6:00 pm! **2021**

- Carriages, Coaches & Buggies
- Sleighs & Wagons
- Antiques & Collectibles
- Furniture
- Miniature Horses
- Harness & Tack
- Quilts & Local Crafts
- Farm & Garden
- Homemade Food

